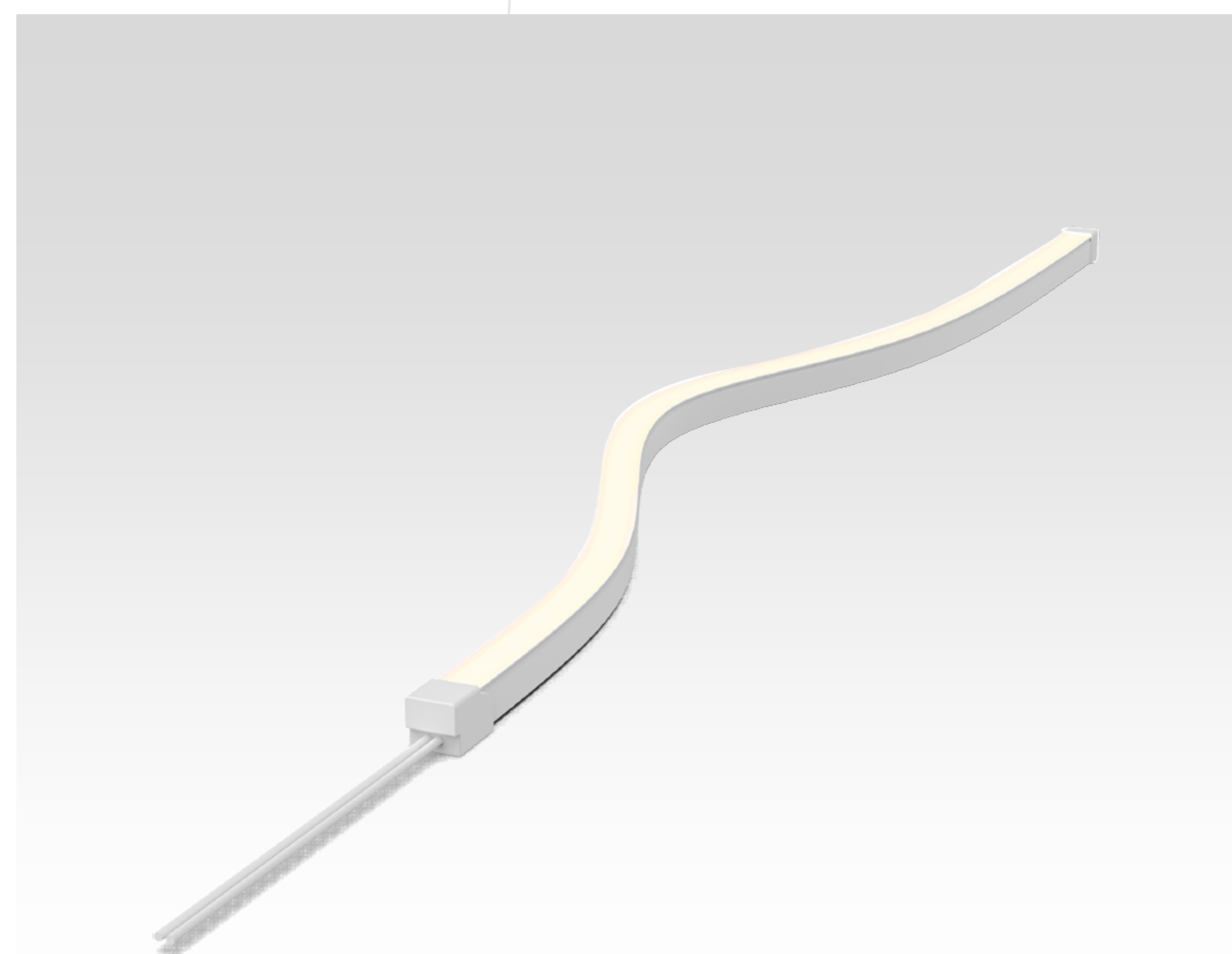


# FLEXI LEXI

## 0707S

### Neon LED Strip for Commercial Retail & Residential Application

Flexi Lexi series bendable in horizontal and vertical direction. Small cutting increment of 16.67mm. Maximum 10 meter run for single feed. UV prove and Salt-mist prove suitable to use in outdoor or seaside. Mounting Clip and profile and stainless-steel chain available for installation



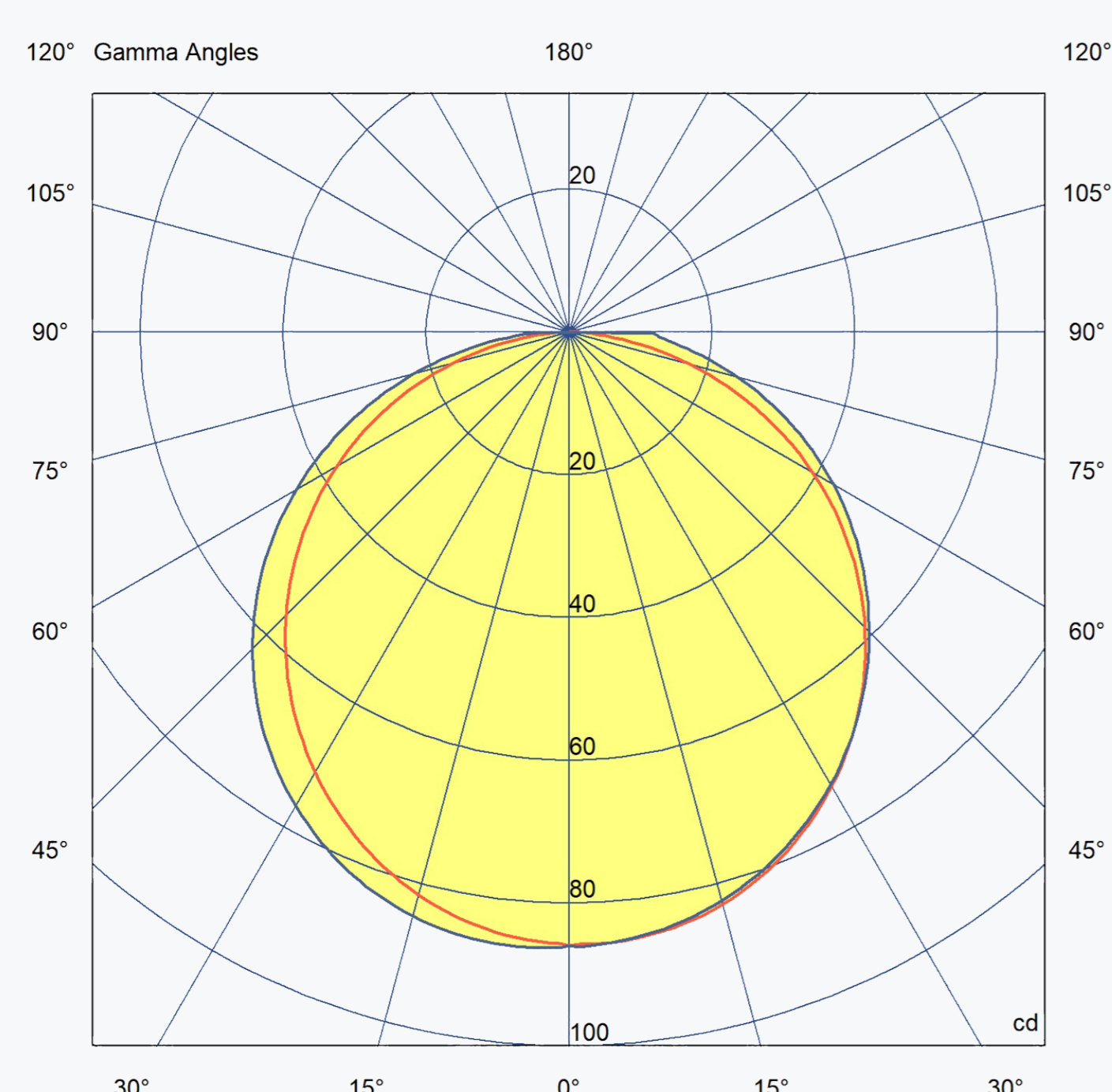
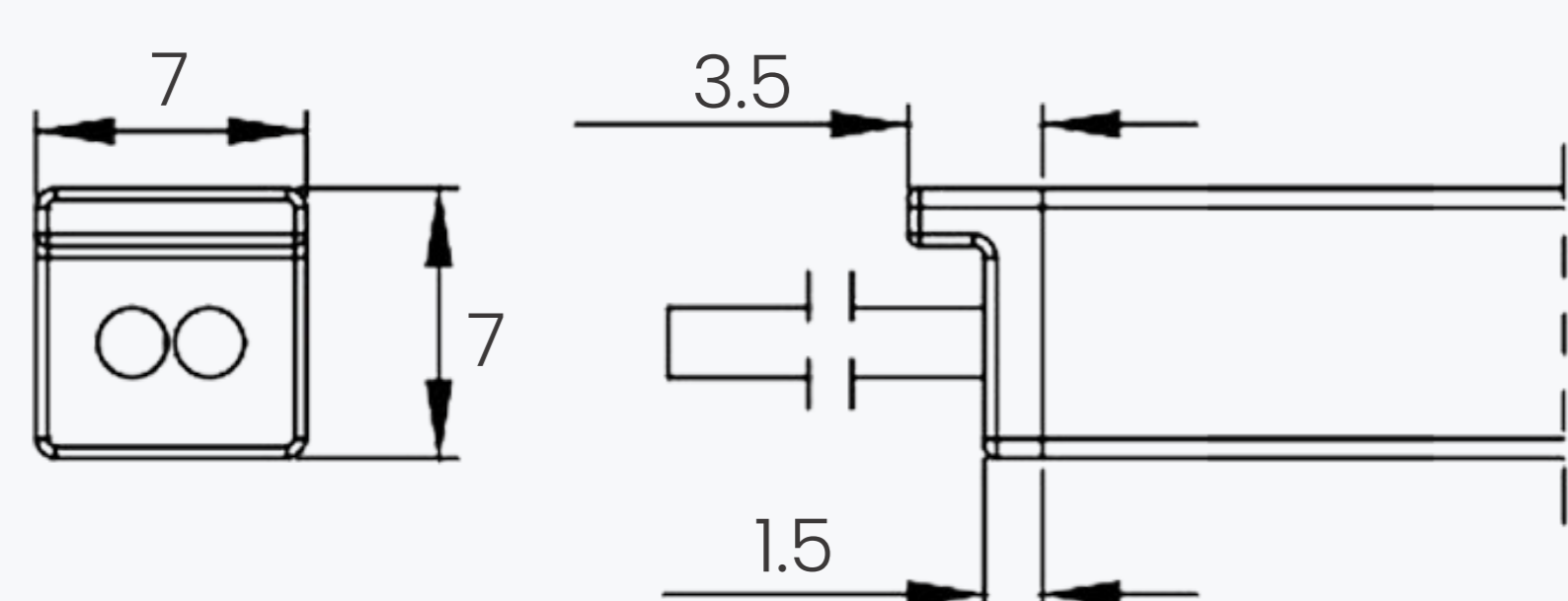
## LUMINAIRE SPECIFICATION

### Light Source Data

System Power (W/m)	10
Delivered Lumen (lm/m)	528 @ 2700 K
Efficacy (lm/W)	53 @ 2700 K
CCT (K)	2700 / 3000 / 4000 / 6500
Beam Angle	115 °
CRI	90
SDCM	<3

### General Data

Mounting	Clip / Profile Mounted
Dimension (mm)	7 (W) x 7 (H) x 10000 (Max L)
Bending Radius (mm)	Min. 30
Finish	White
IP Rating	IP65
Lifetime (L80B10)	50,000hrs
Dimming Control	Phase cut / 0-10V / DALI / Casambi
Warranty	5 years



10 W/m 2700 K