

PROFILR

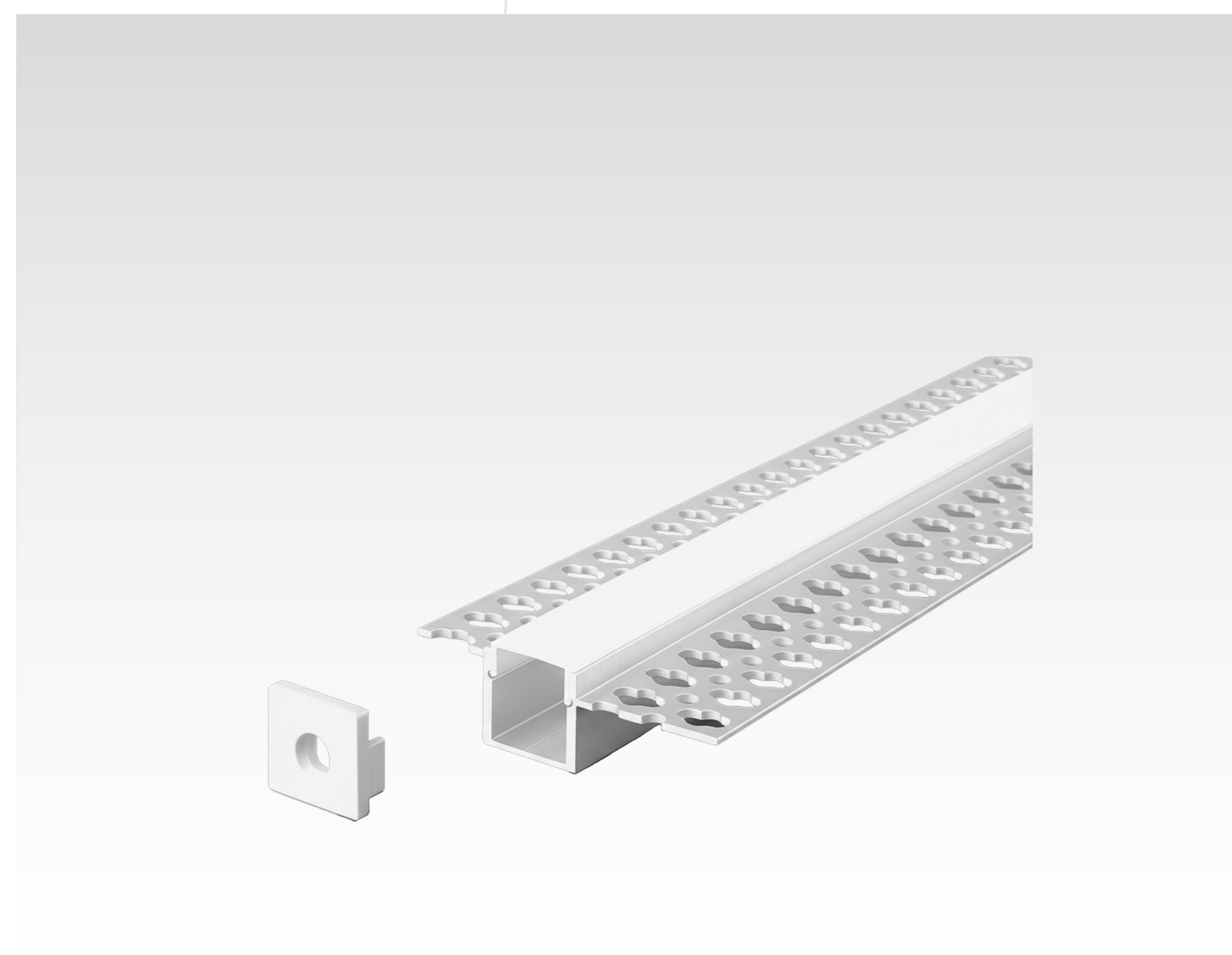
1515 TL

High Quality Aluminum Profile For Ledstrip

This rigid, frameless aluminum profile is designed for surface mounting. Finished in a natural anodized color, it is compatible with all front-emission monochrome LED strips. The profile can be completed with your choice of an opal or translucent diffuser screen for customized light distribution.



IP20/65



LUMINAIRE SPECIFICATION

General Data

Mounting	Semi Recessed
Dimension (mm)	56 x 15 (H)
Cutout (mm)	15
Suitable Tape Width (mm)	12
Maximum Length (mm)	3000
Finish	Nature Anodized
IP Rating	IP20 / 65
Installation	Mounting Clips

